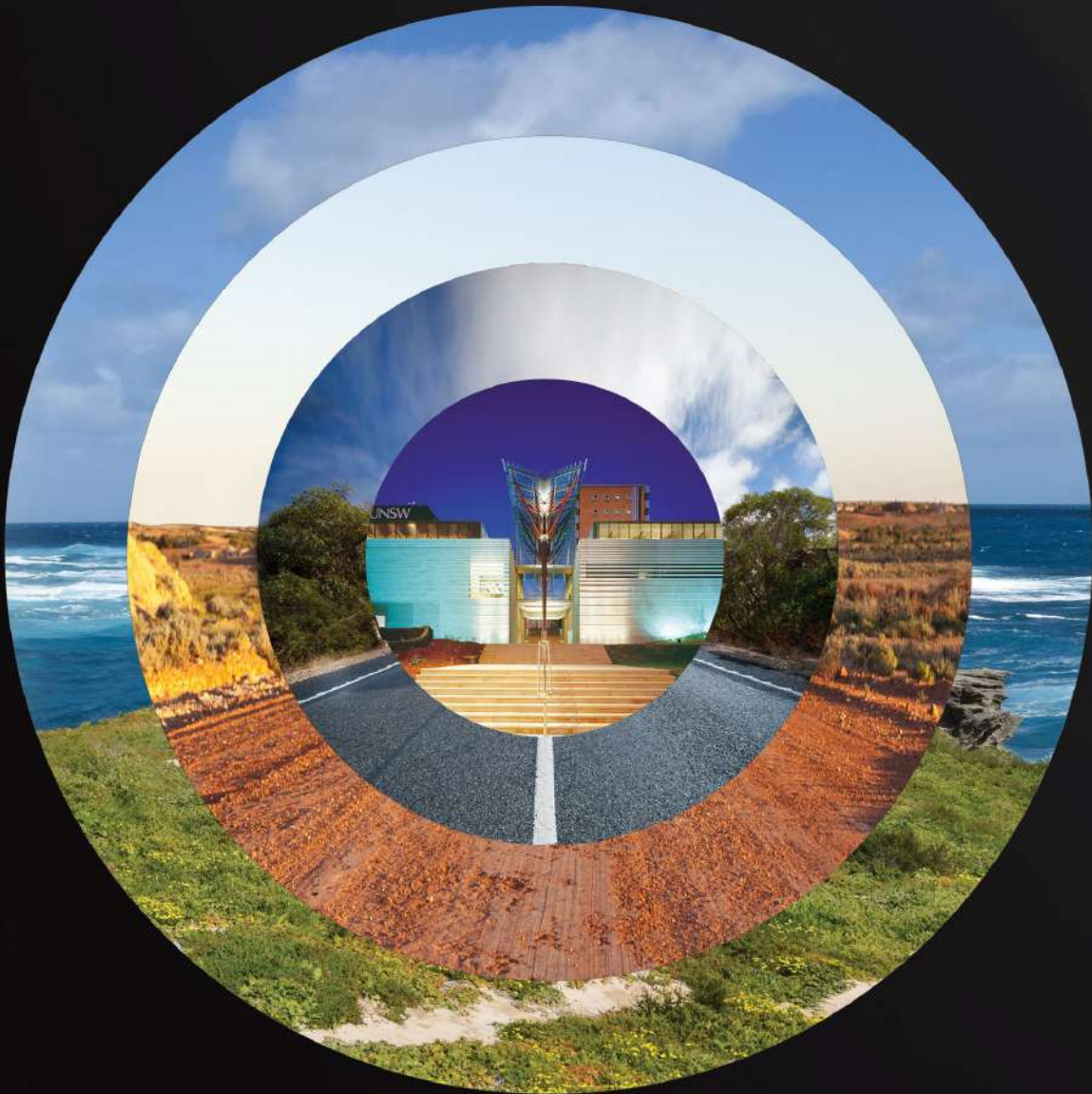




**UNSW**  
SYDNEY

Australia's  
Global  
University

## Study Abroad and Exchange Guide



experience  
**first**

WITH UNSW

2019





*"Only two of the top universities in Australia offered materials science. I looked at the campus facilities, research opportunities and current research and chose UNSW."*

William Nunes (Brazil)



*"I decided that UNSW was the best choice in terms of academic quality and location of the campus. UNSW has good classes, inspiring professors, and a good and active student union."*

Kristofer Kragerud (Norway)



*"I only looked at UNSW because its education is renowned. I didn't seriously consider any other university. I feel really comfortable and at home here."*

Jeewon Ryu (S. Korea)



CRICOS Provider Code: 00098G | ABN: 57 195 873 179

© UNSW Sydney 2018

Acknowledgements: Thomas Kuffer, Morgan Clark, Anna Martin

Design and Layout: Kancy Ho, Edmond Yang

Photography: Ethan Rohloff, Nikki To, Aran Anderson, Michael Amendolia

**DISCLAIMER:** UNSW programs, courses and any arrangements for programs and fees including staff allocated, as stated in the guide or any other University publication, announcement or advice of the University, are an expression of intent only and are not to be taken as a firm offer or undertaking. The University reserves the right to make alterations to any matter contained within this publication without notice. Information in this Guide is accurate as of July 2018, but may be amended without notice by the University. All costs and fees are provided in Australian Dollars (A\$). Any agreement with the University does not remove the right to take action under Australia's consumer protection laws.

**COMPLIANCE:** The Education Services for Overseas Students (ESOS) Act 2000 sets out the legal framework governing delivery of education to overseas students studying in Australia on a student visa. UNSW in providing education services to overseas students complies with the ESOS Framework and the National Code of Practice for Registration Authorities and Providers of Education and Training to Overseas Students 2007 (The National Code).

A description of the ESOS framework can be found at the following link:  
<https://international.unsw.edu.au/Regulatory-Information/Pages/regulatoryinformation.aspx>





# CONTENTS

**4**

Your Australian adventure starts here

**6**

Modern campus, perfect location

**9**

Take a 360° tour

**10**

Why UNSW?

**12**

Sydney, one the world's best

**14**

Experience a warm and  
welcoming community

**16**

Live on campus, make friends for life

**18**

New calendar, new opportunities

**19**

Create your own tailored term

**20**

Academic tracks

**22**

Areas of study

**25**

Research strengths

**26**

Study Abroad

**28**

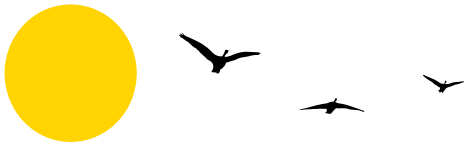
Student Exchange

**30**

Get friendly and helpful support

**32**

English language requirements  
UNSW quick links



# YOUR AUSTRALIAN ADVENTURE STARTS HERE

## Welcome to UNSW Sydney

Boasting spectacular harbour views and a sun-drenched coastline, Sydney is a vibrant global city with a culturally diverse population, burgeoning economy and world-famous beaches and landmarks. It is also home to one of Australia's leading universities, UNSW Sydney.

UNSW Sydney is an internationally acclaimed teaching and research powerhouse, offering study abroad and exchange students a learning experience packed with academic programs, student activities and educational services. The University combines academics recognised as world-leaders in their fields, with modern facilities, rigorous education standards and a diverse community.

Sydney is where people come to expand their education, work and lifestyle opportunities, achieve their goals and reach their ultimate potential. It's Australia's largest city and offers endless experiences from festivals, food culture and international sporting events to shopping, sightseeing and surfing. Plus, Sydney ranks as one of the top student cities in the world\*.

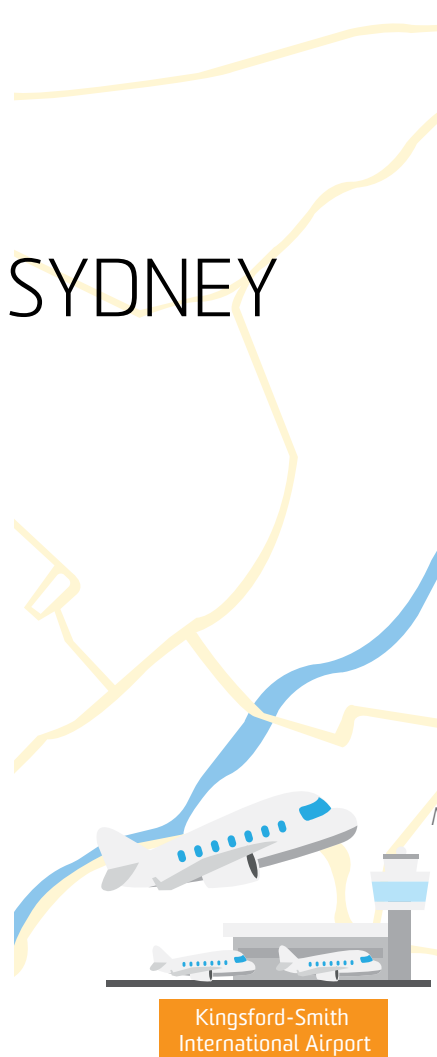
We look forward to providing you with the broadest opportunities to help you flourish Down Under and hope to welcome you to UNSW Sydney soon.

\*QS Best Student Cities Index 2017

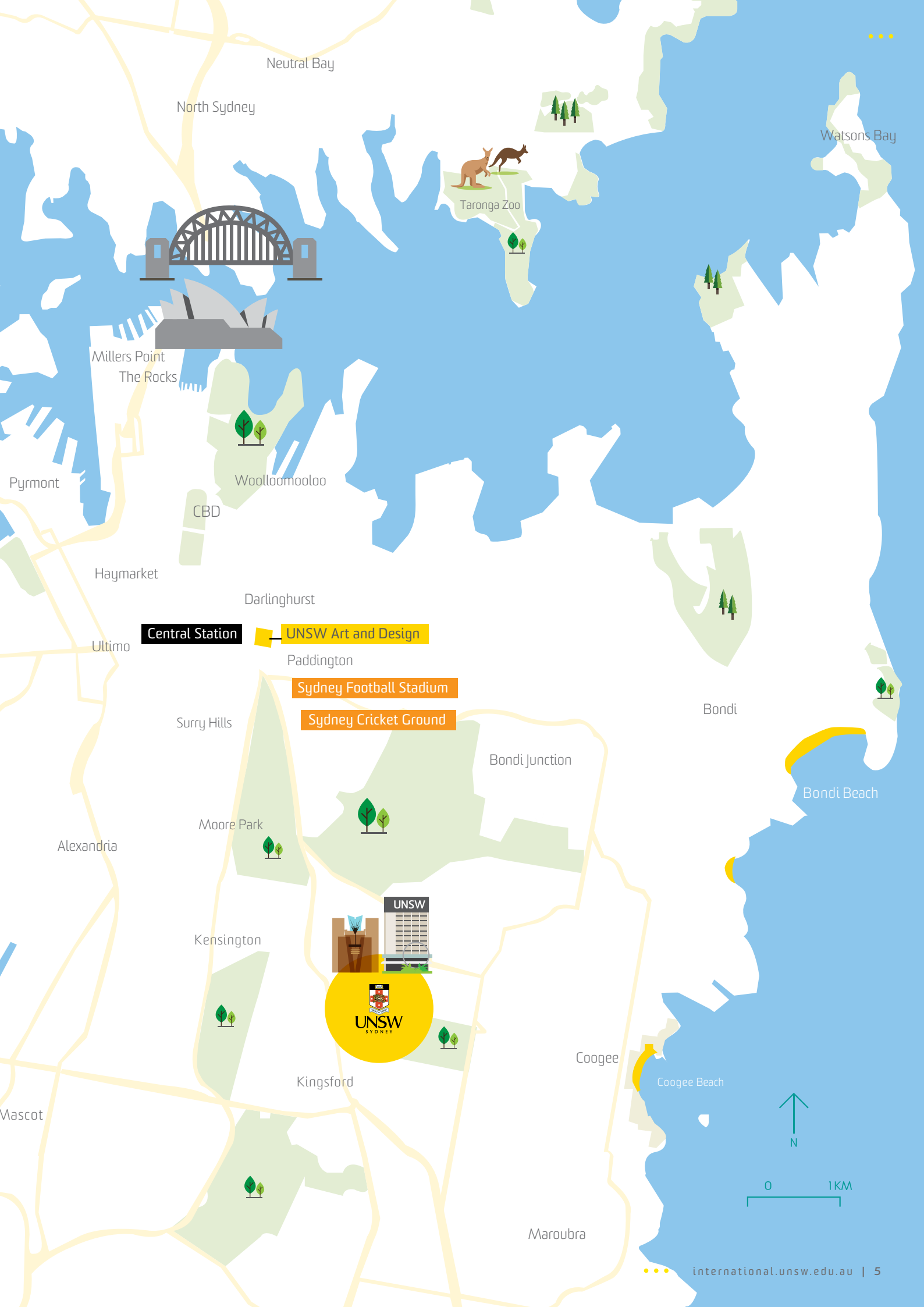


Glebe

## SYDNEY







Neutral Bay

North Sydney

Watsons Bay

Taronga Zoo

Millers Point  
The Rocks

Pyrmont

Woolloomooloo

CBD

Haymarket

Darlinghurst

Central Station

UNSW Art and Design

Paddington

Sydney Football Stadium

Sydney Cricket Ground

Surry Hills

Bondi Junction

Bondi

Bondi Beach

Moore Park

Alexandria

Kensington

Kingsford

Coogee

Coogee Beach

Maroubra

Mascot



0 1 KM





# MODERN CAMPUS, PERFECT LOCATION



**Sydney CBD**

20 minutes  
by bus



**UNSW  
Art & Design**

10 minutes  
by bus



**UNSW  
SYDNEY**

**UNSW  
Institute of  
Languages and  
Foundation  
Studies**



**UNSW  
Canberra**

3 hours by car



**Airport**

20 minutes  
by car





**Bondi Junction**

20 minutes  
by bus



**Bondi Beach**

20 minutes  
by car



**Coogee Beach**

8 minutes by bus









# TAKE A 360° TOUR

Can you see yourself at UNSW? Here is a great way to find out.

Experience our Sydney campuses in 360° from your computer, tablet or phone. Get a taste of life at UNSW Sydney. Observe how our campuses function, get insider access to study and research spaces, and hear from world-leading academics.

When you start the tour, a guide will provide an introduction to the experience. Yellow buttons appear in the landscape as you move around. Click on a button to watch videos about our faculties and people, read about buildings and who is inside, and learn about our facilities, the university's history, and life as a student on campus.

Imagining yourself at UNSW has never been easier.  
[360tour.unsw.edu.au](http://360tour.unsw.edu.au)

Take your experience to the next level and download the UNSW 360 Tour app.





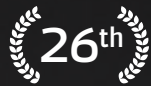


# WHY UNSW?



# TOP 50 UNIVERSITY

We are ranked 45th overall in the world.  
/ QS World University Rankings 2018



## EMPLOYER REPUTATION

We are ranked 26th in the world for  
employer reputation.  
/ QS Global World Rankings 2018

## LEADING INNOVATION



UNSW is the number 1 attended institution for  
Australian startup founders.  
/ Startup Muster 2017

## 22 OF THE WORLD'S TOP 50 SUBJECTS



With Accounting, Finance & Engineering -  
Mineral and Mining in the top 10.  
/ QS Stars University ratings 2018

## LEADERS IN EDUCATION



UNSW Sydney is a founding member of the  
prestigious Group of Eight (Go8) and the  
PLuS Alliance, and we are a member of the  
Association of Pacific Rim Universities (APRU)  
and Universitas 21. We are also the only  
Australian university to be invited to join the  
Global Alliance of Technological Universities.



## \$91 MILLION IN RESEARCH FUNDING

We outperformed all other Australian  
universities to receive \$91 million for industry-  
based collaborative research projects from  
the Australian Research Council (ARC)  
Centres of Excellence in 2017.



## ACADEMIC REPUTATION

We are ranked 36th in the world for  
academic reputation.  
/ QS Global World Rankings 2018



## GRADUATE EMPLOYABILITY

We are ranked 36th in the world for  
graduate employability.  
/ QS Global World Rankings 2018

## 5 STARS+ ★★★★★

UNSW Sydney was the first university in the world  
to be awarded the maximum QS Five Star Plus  
rating across teaching, research, employability,  
facilities and innovation categories. We continue  
to hold this rating in 2018.  
/ QS Stars University ratings 2018



## INTERNATIONAL UNIVERSITY

We are the 23rd most international university  
in the world.  
/ Times Higher Education 2018



## SOLAR POWERED BY 2020

UNSW Sydney is on track to be 100% solar  
powered and carbon neutral by 2020.





# SYDNEY, ONE OF THE WORLD'S BEST

## The business capital of Australia

Sydney is home to more global firms than any other Australian city. A gateway to Asian economies, the city attracts great minds and is known for its ideal climate, relaxed outdoor lifestyle and friendly locals. It's no wonder Sydney was voted the 10th best city in the world to live and work.\*

\*Mercer Quality of Living Survey 2017

## Student friendly

Sydney is a diverse and cosmopolitan city. It ranked 13th best student city in the world in the QS Best Student Cities Index 2017. The Harbour City is not just a destination but a life experience. World-class performances, spectacular events and stunning landscapes await you in a city where there is as much to do at 7am as 11pm.

## Love Sydney for less

There are endless affordable indoor and outdoor activities to enjoy in Sydney. Visit free art galleries, watch a movie at the local cinema, set off on a coastal walk, enjoy a barbecue in the park, go snorkelling or surfing at the beach, or grab a cheap lunch or dinner in our neighbouring suburbs.







## Surrounding areas

UNSW Sydney is located in the leafy eastern suburbs minutes away from Coogee Beach and Centennial Park. The surrounding suburbs of Kingsford, Randwick and Maroubra are full of cafes and restaurants offering an impressive range of international cuisine, reflecting the area's diversity.

## Outside Sydney

Hop on a train to the Blue Mountains for some fresh air, go north or south along the coast for quiet and stunning beaches, or head inland for Australian rural life. And you can always hop on a plane to Melbourne, the Gold Coast, New Zealand or Bali, just like the locals.

For more information visit:

[international.unsw.edu.au/sydney-worlds-best](http://international.unsw.edu.au/sydney-worlds-best)







# EXPERIENCE A WARM AND WELCOMING COMMUNITY

UNSW offers a village atmosphere that will make you feel right at home.

## Campus facilities

UNSW Sydney's Kensington campus has everything you need including dozens of cafes and restaurants, two banks, four ATMs, a post office, supermarket, food cooperative, pharmacy, medical centre and dentist, two libraries, a fitness and aquatic centre, and sports fields and courts.

## Study areas

Work on your assignments at one of our many indoor computer labs or outdoor study areas complete with power outlets to charge your devices. Stay connected to family and friends with free Wi-Fi throughout the campus.

## Clubs and societies

Join a club or society and make new friends. Choose from more than 300 student-led clubs and social societies across a range of interests for food lovers, sport, running, debating, biology conservation, the Exchange Society and more.

## Support and development

Access support to help you make the most of your time at UNSW. Develop your academic skills, boost your wellbeing, access our disability services and open up new opportunities to grow.

## Language and conversation skills

Improve your language skills by participating in one of our many programs or discussion groups on campus. We can even match you with a partner who shares your language, while you hone your English.

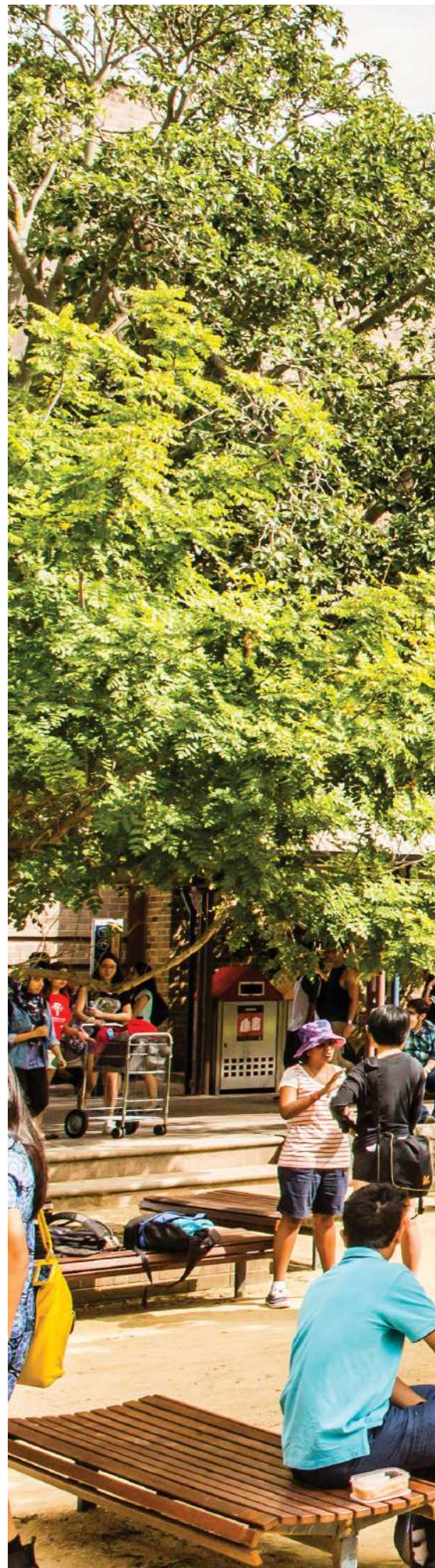
## Religious centre

Our interfaith religious centre is for all UNSW Sydney students. Chaplains conduct services and studies and offer spiritual counselling. The Islamic Society has an Imam in attendance with meeting and prayer rooms available.

## Staying safe

To maintain our safe and enjoyable study environment, our security service provides a 24-hour comprehensive presence across campus. Our StaySafe@UNSW free app allows you to track the night bus and provides safety tips, contacts, a newsfeed, and more.

For more information visit:  
[international.unsw.edu.au/life-at-unsw](http://international.unsw.edu.au/life-at-unsw)











# LIVE ON CAMPUS, MAKE FRIENDS FOR LIFE

UNSW is the largest provider of student housing in Sydney with award-winning accommodation on and off campus. Live within walking distance of your lecture halls, meet people from around the world and make lifelong friends. Alternatively, find your own home in the neighbouring Eastern Suburbs or by the beach.

## Accommodation at UNSW

### Colleges

Colleges provide a choice of full-board, partly catered and self-catered style accommodation. There is also a range of gender-specific options including male-only, female-only, and mixed male and female accommodation. Most colleges cater for dietary requirements like halal, kosher and vegetarian.

### Apartments

Apartments offer independent-style living for undergraduates, postgraduates, couples, and families with children. There are apartments available on and off campus and costs vary depending on the number of rooms and the location.

University accommodation should be organised in advance as places book up quickly. Apply for UNSW accommodation at [housing.unsw.edu.au](https://housing.unsw.edu.au)

## Private accommodation options

### Rental property

There are many private rental properties available in the suburbs surrounding UNSW Sydney. Costs vary according to the number of bedrooms, condition and location. When renting, you can expect to sign a six- or 12-month lease and pay rent in advance, plus a security deposit called a bond. Rental properties can come furnished or unfurnished and additional expenses like electricity, gas, telephone and Wi-Fi are typically not included in the rental price. Costs vary but usually range from A\$200 – A\$300 per student per week in a shared house or apartment.

### Temporary accommodation

If you haven't confirmed your university accommodation before you arrive, we recommend you allow three to four weeks before classes begin to look for private housing to give you time to settle in and attend orientation sessions. Be sure to book short-term accommodation first, then look for long-term options in person. This can include private hotels, motels, hostels, lodges or furnished apartments ranging from A\$45 to A\$300 per day.

### Under 18s

Arrangements must be made for students under 18 years of age. These requirements are in line with Australian Government regulations for the care and welfare of international students under 18.

[student.unsw.edu.au/visa18](https://student.unsw.edu.au/visa18)

For more information, visit

[student.unsw.edu.au/accommodation](https://student.unsw.edu.au/accommodation)





## Estimated cost of living off campus versus living on campus

Costs listed in Australian dollars

	Independent		UNSW owned and/or affiliated	
	Share house	One bedroom	UNSW Apartment	UNSW College
<b>Set-up costs</b> Bond, furniture, utility connections etc.	\$3,000	\$3,700	\$0	\$0
Accommodation per week	\$200 to \$300	\$400 to \$550	\$349	\$445
Internet and phone	\$20 to \$55	\$20 to \$55	\$0	\$0
Gas and electricity	\$35 to \$140	\$35 to \$140	\$0	\$0
Food (groceries and eating out)	\$80 to \$200	\$80 to \$200	\$80 to \$200	\$0
Transport to university	\$40	\$40	\$0	\$0
<b>Average weekly total</b>	\$476.50	\$701.50	\$449	\$445
<b>Total annual cost</b>	\$24,778	\$36,478	\$23,348*	\$23,140*

Living costs are indicative only and will vary based on the location, number of people you live with and the condition of the housing. Costs will also vary depending on the type of the accommodation and the catering offered.

For more information, visit [student.unsw.edu.au/approximate-weekly-costs](http://student.unsw.edu.au/approximate-weekly-costs) and [www.studyinaustralia.gov.au/global/live-in-australia/living-costs](http://www.studyinaustralia.gov.au/global/live-in-australia/living-costs).

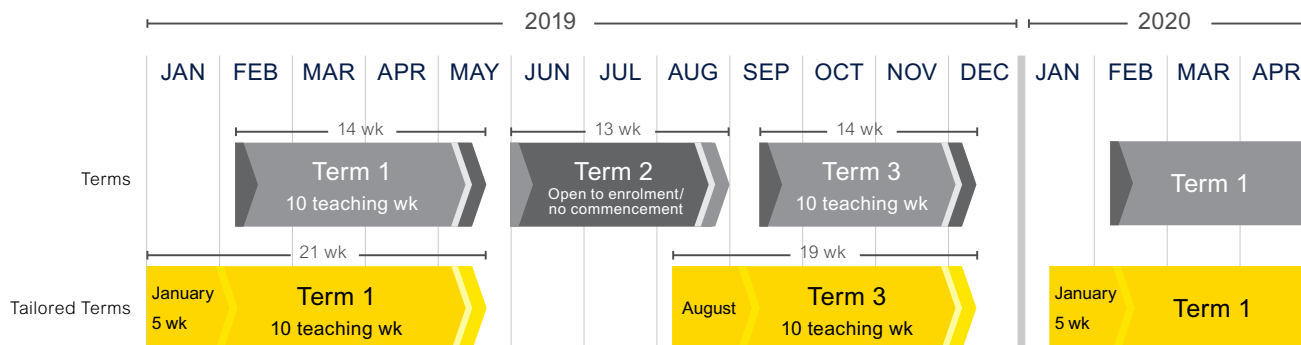
\*Costs will vary depending on the type of the accommodation and the catering offered.



# NEW CALENDAR, NEW OPPORTUNITIES

Starting in 2019, UNSW Sydney will move to a new academic calendar, called UNSW3+, with three 10-week terms per year plus an intensive January term. UNSW3+ better aligns with university calendars in the Northern Hemisphere, eliminating the traditional overlap between the Australian terms and Northern Hemisphere summer.

This is great news for students wanting to explore internships or summer job opportunities. Under the new calendar, each term allows students to enrol in up to three courses. For students required to take four courses while at UNSW Sydney, there is the tailored term option.



The new calendar has flexible options for enrolment in a three-course term, a four-course term, or a full academic year of eight courses. Find the opportunity that works best for you.

## Term 1 (February – May)

Students enrol in a full load of 3 courses (18 UOC).

## Tailored Term 1 (January – May)

January intensive course + Term 1

Students enrol in 4 courses (24 UOC), taking an intensive course in January followed by a full academic load of 3 courses in Term 1.

## Term 1 + Term 2 (February – August)

Students enrol in 4 courses (24UOC) taking two courses in each term, also with the option of taking 5-6 courses.

## Term 3 (September – December)

Students enrol in a full load of 3 courses (18 UOC).

## Term 3 + January Intensive (September – February)

Students enrol in 4 courses (24 UOC), taking a full academic load of 3 courses in Term 1 followed by an intensive course in January.

## Tailored Term 3 (August – December)

August intensive course + Term 3

Students enrol in 4 courses (24 UOC), taking an intensive course in August followed by a full academic load of 3 courses in Term 3.

*UOC denotes units of credit*

## Term 1 (Full Year)

Term 1 + Term 2 + Term 3 OR Tailored Term 1 + Tailored Term 3

Students electing to study for a full academic year at UNSW can enrol in 8 courses (48 UOC) either spread over Terms 1, 2 and 3, or spread over Tailored Terms 1 and 3.

## Term 3 (Full Year)

Term 3 + Term 1 + Term 2 OR Tailored Term 3 + Tailored Term 1

Students electing to study for a full academic year at UNSW can enrol in 8 courses (48 UOC) either spread over Terms 3, 1 and 2, or spread over Tailored Terms 3 and 1.

## 2019 STUDY ABROAD AND EXCHANGE DATES

2019	Number of courses	Units of credit	Orientation date	Start date	End date
Tailored Term 1	4	24	7 Jan	7 Jan	19 May
Term 1	3	18	14 Feb	18 Feb	19 May
Term 1 + Term 2	4 – 6	24 – 36	14 Feb	18 Feb	29 Aug
Term 1 (Full Year)	8	48	14 Feb	18 Feb	15 Dec
Tailored Term 3*	4	24	15 Aug	19 Aug	15 Dec
Term 3	3	18	12 Sep	16 Sep	15 Dec
Term 3 + January	4	24	12 Sep	16 Sep	12 Feb
Term 3 (Full Year)	8	48	12 Sep	16 Sep	30 Aug 2020



# CREATE YOUR OWN TAILORED TERM

For students required to take four courses during their term of study abroad or exchange, UNSW Sydney offers the tailored term enrolment option. Tailored terms allow students to do an intensive course prior to a 10-week term, either in January before Term 1 or in August before Term 3. This additional course paired with the normal three-course term allows students to complete their four courses.

## Sample tailored term enrolments

These sample enrolments demonstrate how students of various academic backgrounds could formulate their schedule under the tailored term option.

For a full listing of tailored term intensive course offerings, please visit:

[international.unsw.edu.au/study-abroad-at-unsw](https://international.unsw.edu.au/study-abroad-at-unsw)



### Business

Marina is interested in expanding her management, interpersonal and marketing skills during her Study Abroad. She could choose to take:

- Intensive course — Business Negotiations in January
- Marketing Fundamentals in Term 1
- Managing Across Cultures in Term 1
- Microeconomics 2 courses in Term 1



### Computer Science

Irene is studying Computer Science. For her Student Exchange, she could opt to take:

- Intensive course—Human Computer Interaction held in August
- Database Systems in Term 3
- The Marine Environment in Term 3
- Australia 1788-1900: The Fatal Shore? in Term 3



### Engineering

Ben is studying Engineering at his home university. For his Study Abroad at UNSW Sydney, he could take:

- Intensive course — Fluid Mechanics in January
- Design and Application of Materials in Science and Engineering in Term 1
- Circuits & Signals in Term 1
- Thermodynamics in Term 1



### Social Science

Gabriel would like to learn something about Australian culture while he is on exchange at UNSW Sydney. He could opt to take:

- Intensive course—Indigenous Australia in August
- Australian Legends: Introduction to Australian Studies in Term 3
- Abnormal Psychology in Term 3
- Psychology of Work courses in Term 3





# ACADEMIC TRACKS

As a comprehensive, research-intensive university, **UNSW Sydney offers hundreds of courses across nine academic faculties** during our three terms.

Most of these are open to study abroad and exchange students. While students are encouraged to independently research course options, the following academic tracks may help focus course selections in your specific area of study.

**These tracks are intended as a helpful guide and are not prescriptive.** Students from the areas of studies listed below are welcome to research and enrol in courses outside of these courses.

For more information on these courses and a comprehensive list of course offerings, visit the UNSW Sydney Course Handbook at [handbook.unsw.edu.au/current](http://handbook.unsw.edu.au/current)

- ARTS1190 – Australian Legends: Introducing Australian Studies
- ARTS2270 – Australia 1788-1900: Invasion to White Australia
- ATSI1011 – Indigenous Australia
- ARTS1211 – Australia's Asian Context



## Australian & Indigenous Studies

- ARTS2031 – Australian Literature
- ARTS2271 – Australia's Longest Century: sex, society, culture and race since 1900
- GENL0231 – Sport, Law & Society in Australia
- ATSI1012 – Aboriginal Sydney

- ECON2112—Game Theory and Business Strategy
- ECON3104—International Macroeconomics
- FINS1613—Business Finance



## Business & Entrepreneurship

- MGMT2010—Innovation & Entrepreneurship
- MGMT2101—International Business & Multinational Operation

- COMP1531 – Software Engineering Fundamentals
- COMP3222 – Digital Circuits and Systems



## Computer Science

- COMP2111 – System Modeling and Design
- COMP3231 – Operating Systems

- MSCI0501 – The Marine Environment
- GEOS1211 – Earth and Environmental Science



## Environmental & Sustainability Studies

- CLIM1001 – Introduction to Climate Change
- COMP3231 – Operating Systems



### Mechanical

MMAN2600 – Fluid Mechanics

MMAN2700 – Thermodynamics

### Civil

CVEN3202 – Soil Mechanics

CVEN2303 – Structural Analysis  
and Modeling



## Engineering

### Electrical

ELEC2117 – Electrical Systems Design

ELEC2134 – Circuits & Signals

ELEC2141 – Digital Circuit Design

ELEC3114 – Control Systems



## Media & Communications

ARTS1090 – Media, Culture and  
Everyday Life

ARTS1091 – Media, Society  
and Politics

ARTS2092 – Global Media:  
Markets, Flows and Cultures

ARTS2094 – Visual Communication



## Psychology

PSYC1023 – Abnormal Psychology

PSYC1025 – Psychology of Work

PSYC2061 – Social and  
Developmental Psychology

PSYC3121 – Social Psychology

# DESIGN YOUR TIMETABLE

### 1. Select your core courses

Explore the full list of courses in the UNSW Sydney Online Handbook. Browse the suggested academic pathways to assist your selection. While every student's academic needs are different, most students take two core courses while studying at UNSW Sydney.

### 2. Select your elective courses

Explore the UNSW Sydney Online Handbook for our range of elective courses. The Australian Studies courses on page 23 are preapproved electives that offer a great way to learn about our diverse country and culture.

### 3. Submit your courses for Faculty approval

Once you decide which courses you are interested in, submit them for Faculty approval following the instructions provided by UNSW Sydney staff. Additional courses can be submitted for approval at a later date.



# AREAS OF STUDY

These are some of the options for Study Abroad and Exchange students.

For a full listing please see the UNSW Online Handbook link: [handbook.unsw.edu.au](http://handbook.unsw.edu.au)

## Art & Design

Animation  
Art administration  
Art history and theory  
Ceramics  
Curating  
Critical theory  
Design education  
Design process  
Design computing  
Digital imaging  
Drawing  
Film  
Graphic design  
Interactive media  
Jewellery  
Metal casting  
Museum studies  
New media  
Object design  
Painting  
Photography  
Printmaking  
Programmable design  
Sculpture installation & performance  
Spatial design  
Sound  
Studio lighting  
Textiles  
Video  
3D modelling  
3D computer-aided design  
[artdesign.unsw.edu.au](http://artdesign.unsw.edu.au)

## Arts & Social Sciences

Advertising  
Anthropology  
Art history and theory  
Asian studies  
Australian studies  
Chinese studies  
Communication  
Creative writing  
Cultural studies  
Criminology and criminal justice  
Dance studies  
Development studies  
Economics  
English literary studies  
Environmental humanities  
European studies  
Film studies  
French studies  
Globalisation studies  
German studies  
History  
History and philosophy of science

Indigenous studies  
Indonesian studies  
International relations  
International studies  
Italian studies  
Japanese studies  
Journalism  
Korean studies  
Latin America studies  
Legal studies  
Linguistics  
Literature  
Media and culture studies  
Modern Greek studies  
Music  
Philosophy  
Politics  
Psychology  
Public relations  
Screen and sound production  
Social science and policy  
Social work  
Sociology  
Spanish studies  
Theatre and performance studies  
Women's and gender studies  
[arts.unsw.edu.au](http://arts.unsw.edu.au)

## Built Environment

Architectural computing  
Architectural studies  
Construction project management  
Industrial design  
Interior architecture  
Landscape architecture  
Planning  
Property and development  
Sustainable development  
Urban development and design  
[be.unsw.edu.au](http://be.unsw.edu.au)

## Business

Accounting  
Actuarial studies  
Banking  
Business law  
Business strategy  
Economics  
Finance  
Human resource management  
Information systems  
International business  
Management  
Organisation and management  
Marketing  
Risk management\*  
Social Impact\*

Strategy and entrepreneurship\*  
Taxation  
[business.unsw.edu.au](http://business.unsw.edu.au)

## Engineering

Aerospace engineering  
Bioinformatics  
Biomedical engineering\*  
Ceramic engineering  
Chemical engineering  
Civil engineering  
Computer science  
Electrical engineering  
Environmental engineering  
Geothermal engineering\*  
Industrial engineering  
Manufacturing engineering  
Mechanical engineering  
Mechatronic engineering  
Mining engineering  
Petroleum engineering  
Photonic engineering  
Photovoltaic engineering  
Production engineering  
Renewable energy engineering  
Software engineering  
Solar energy engineering  
Surveying  
Spatial information systems  
Telecommunications  
[eng.unsw.edu.au](http://eng.unsw.edu.au)

## Law

Australian legal system  
Criminal law  
Human rights law  
Religion  
Sport and law  
To be eligible to enrol in the full range of courses in Law, students must be enrolled in a Law degree at home.  
[law.unsw.edu.au](http://law.unsw.edu.au)

## Medicine

Anatomy  
Exercise physiology  
Health and exercise science  
Neuroscience  
Pathology  
Pharmacology  
Physiology  
Public health\*  
Study Abroad students cannot enrol in clinical Medicine courses.  
[med.unsw.edu.au](http://med.unsw.edu.au)

\*Only available at postgraduate level



## Science

Anatomy  
 Archaeology  
 Aviation management  
 Biochemistry  
 Bioinformatics  
 Biology  
 Biomechanics  
 Biotechnology  
 Chemistry  
 Climate systems science  
 Conservation  
 Data science  
 Earth science  
 Ecology  
 Environmental management  
 Environmental science  
 Evolutionary biology  
 Food science and technology  
 Genetics  
 Geochemistry  
 Geography  
 Human geography  
 Immunology  
 Marine science  
 Marine geology  
 Materials science and engineering  
 Mathematics  
 Medicinal chemistry  
 Metallurgy  
 Microbiology  
 Molecular and cell biology  
 Molecular genetics  
 Nanodevices  
 Nanomaterials  
 Nanotechnology  
 Neurobiology  
 Neuroscience  
 Nutrition  
 Oceanography  
 Pathology  
 Pharmacology  
 Physics  
 Physiology  
 Psychology  
 Quantitative risk  
 Quantum mechanics  
 Remote sensing  
 Safety science  
 Solid state physics  
 Spatial information systems  
 Statistics  
 Sustainability  
 Toxicology  
 Zoology  
[science.unsw.edu.au](http://science.unsw.edu.au)

# SPOTLIGHT ON AUSTRALIAN STUDIES COURSES

While you are studying abroad in Sydney, why not take the opportunity to learn more about the people, history, and landscape that make up this unique country?

UNSW offers pre-approved, elective courses intended to introduce students to a range of fascinating topics and enrich your international experience:

- ATSI1012: Aboriginal Sydney
- ARTS1190: Australian Legends: Introducing Australian Studies
- ARTS1840: Australian Politics in the Global Perspective
- ARTS2031: Australian Literature
- ATSI1011: Indigenous Australia
- BEES6601: Introduction to Sydney Environment
- GENL0250: Sport, Law and Society in Australia
- MSCI0501: The Marine Environment

## Experience the Great Barrier Reef for course credit

Aviation and Sustainable Tourism (SCIF3900) is a unique course designed to provide students with a field-led development of skills in comprehending and assessing the physical, social and economic sustainability of societal decisions in the context of the Great Barrier Reef marine park.

The course includes a **field excursion to Lady Elliot Island**.

### Course details:

Contact hours: 18 hours of class delivered on the island and a further 20 hours delivered on-campus during the beginning weeks of Term 1.

Credit load: Six units of credit.

Interested in this exciting academic opportunity?  
 Contact [studyabroad@unsw.edu.au](mailto:studyabroad@unsw.edu.au)  
 for additional information.









# RESEARCH STRENGTHS

Established in 1949 with a unique focus on scientific, technological and professional disciplines, UNSW Sydney has a proud tradition of world-class research and research facilities focused on areas critical not only to Australia but internationally.

Research areas range from:

- Climate change, environmental and sustainability, renewable energies and renewable materials
- Life-saving medical treatments and therapies
- Ground-breaking technologies and new processes
- World-leading health and social policies

The University's award-winning researchers are strongly represented in national and international prizes, honours and fellowships.

We continue to build on our reputation for world-class research in areas critical to the future, using our close links with industry to ensure our work has practical application and impact.

Our research focus includes the following areas::

- Biomedical Sciences
- Water, Climate, Environment and Sustainability
- Next Generation Materials and Technologies
- Social Policy, Government and Health Policy
- ICT, Robotics and Devices
- Law, Business and Economics
- Fundamental and Enabling Sciences
- Contemporary Humanities and Creative Arts
- Defence and Security

[research.unsw.edu.au](https://research.unsw.edu.au)

## Study Abroad Research Practicum

The Study Abroad Research Practicum enables students from both partner and non-partner institutions to undertake short-term research visits at UNSW Sydney. There is flexibility in when you commence, with UNSW Sydney welcoming students weekly.

You will have access to an appropriate supervisor, services, libraries, campus amenities and liability insurance for UNSW Sydney premises.

### Tuition fees

Tuition fees of A\$1,000 per term and an administration fee of A\$330 are applicable.

### Eligibility

You must be currently enrolled in an undergraduate or postgraduate degree with a minimum GPA of 3.0 (or equivalent) and you must meet UNSW Sydney's English language requirements (see page 32).

Before applying, contact a supervisor at UNSW Sydney and discuss your proposed research.

### How to apply

Visit our website for step-by-step instructions on the application process: [international.unsw.edu.au/research-practicum](https://international.unsw.edu.au/research-practicum)

You can also contact us at [practicum@unsw.edu.au](mailto:practicum@unsw.edu.au) for more information.

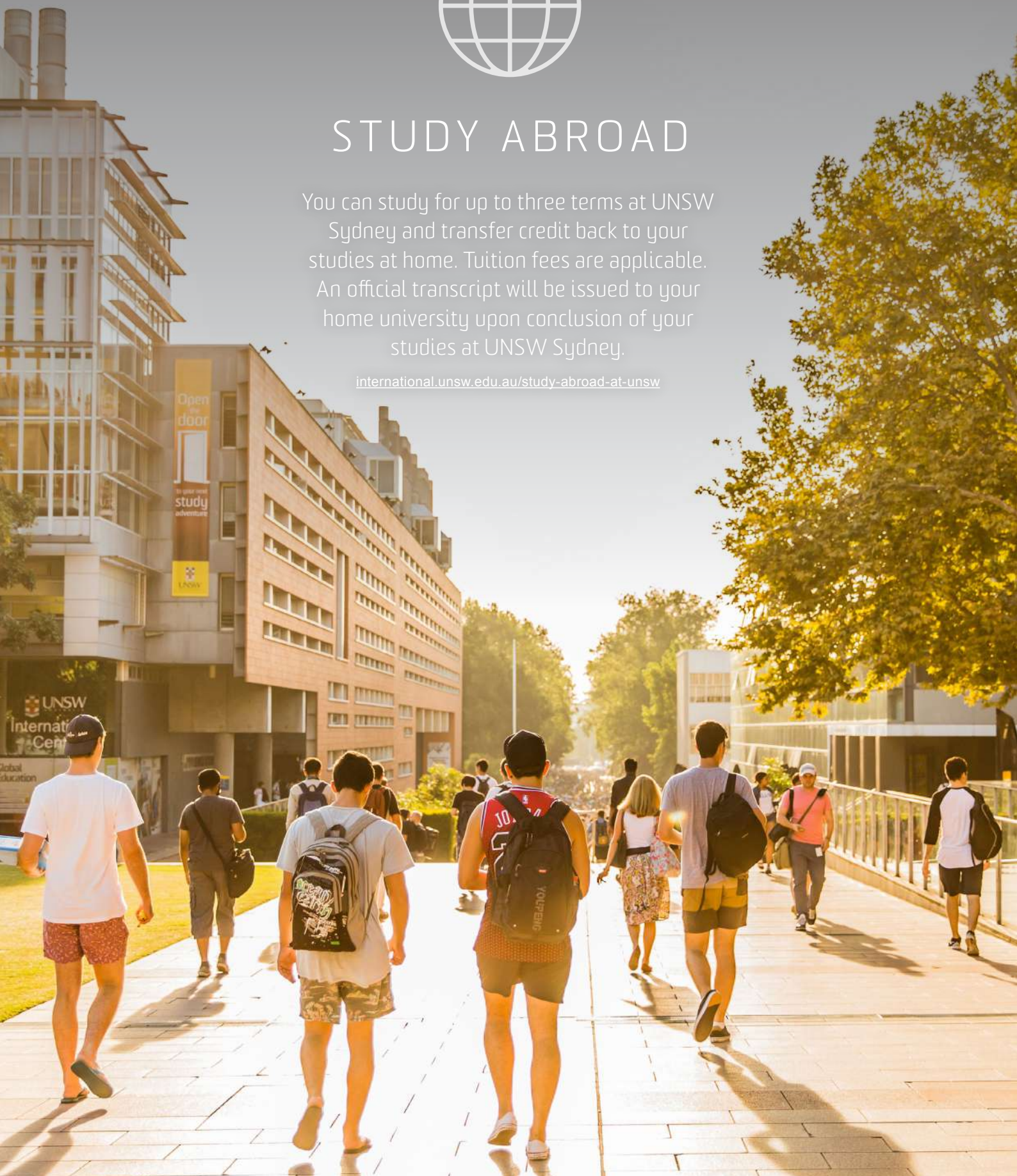




# STUDY ABROAD

You can study for up to three terms at UNSW Sydney and transfer credit back to your studies at home. Tuition fees are applicable. An official transcript will be issued to your home university upon conclusion of your studies at UNSW Sydney.

[international.unsw.edu.au/study-abroad-at-unsw](http://international.unsw.edu.au/study-abroad-at-unsw)





## Tuition fees and enrolment

Tuition fees fall into three different brackets:

PROGRAM	FEE (Per term)	FEE (Per tailored term)
Undergraduate program	A\$9,225	A\$12,300
Combined undergraduate / postgraduate program	A\$9,485	A\$12,645
Postgraduate program	A\$9,740	A\$12,990

## Overseas Student Health Cover (OSHC)

Students are required to have OSHC for the duration of their student visa (except holders of Norwegian, Swedish and Belgium passports). Study Abroad will purchase OSHC on your behalf through Medibank Private.

Please check the UNSW Sydney Study Abroad website for the latest OSHC costs. Visit: [international.unsw.edu.au/study-abroad-at-unsw](http://international.unsw.edu.au/study-abroad-at-unsw)

## Laboratory loading

An additional A\$250 is applied to each course that has a substantial laboratory component.

## What can you study

You can study almost any course at UNSW Sydney as long as you have the required background knowledge. You can also take a supervised internship or research placement to gain industry experience.

A complete list of courses can be found in the UNSW Sydney Online Handbook and we recommend you check our UNSW Sydney Online Timetable to ensure your chosen courses are available.

[handbook.unsw.edu.au](http://handbook.unsw.edu.au)  
[timetable.unsw.edu.au](http://timetable.unsw.edu.au)

Enrolment is subject to course availability and your academic background. It is important to be flexible with your course choice as some fill up quickly or may not be offered in a particular term.

## Internships

UNSW Sydney Study Abroad offers some internship opportunities. The internships are weighted at six units of credit or one course and students are expected to enrol in another 12 – 18 units of credit to make up the fulltime study load. Contact our office for further information and application forms.

## UNSW Social Media Ambassador Scholarship

Are you interested in sharing your study abroad experience with friends and classmates back home? A limited number of Social Media Ambassador Scholarships of \$1,000 each are available to international students completing an inbound Study Abroad program at UNSW Sydney.

These competitive awards provide an opportunity to showcase what life at UNSW Sydney is really like through posts made via students' own personal social media accounts. For more details on what's involved and how to apply please contact the Study Abroad team at: [studyabroad@unsw.edu.au](mailto:studyabroad@unsw.edu.au).

## Enrolment requirements

Students must be enrolled in 18 – 24 units of credits per term. Most courses are weighted at six units of credit, so typical enrolment will three courses in a regular term and four courses in a tailored term.

## Entry requirements

To be eligible for the Study Abroad program you need to have achieved a cumulative grade point average of 3.0 on a 4.0 grading scale or meet the equivalent standard from your home institution. You also need to meet UNSW Sydney English language requirements.

## Application process

### 1 Create a student profile online

<http://unsw.openacademies.com/registerforstudyabroad>

### 2 Start your application

Check the name on your application is the same as on your passport.

### 3 Submit your application online

As part of your application, you need to upload supporting documents including:

1. Your most recent academic transcript (with English translation) as pdf
2. The ID page of your passport
3. Proof of English Language Proficiency if applicable (see page 32)

### 4 We will send you a letter of offer

Your application is assessed by Study Abroad. If successful you will receive your offer letter by email.

### 5 Accept your offer and apply for housing

Accept your offer and pay your deposit and/or OSHC fees if applicable. You will receive your confirmation of enrolment (CoE) for your visa application.

### 6 Confirm your visa and book flights to arrive in time for orientation

## Study Abroad

UNSW Sydney

T: +61 2 9385 3179

E: [studyabroad@unsw.edu.au](mailto:studyabroad@unsw.edu.au)

W: [studyabroad.unsw.edu.au](http://studyabroad.unsw.edu.au)





# STUDENT EXCHANGE

The student exchange program is designed for students from partner universities who want to undertake coursework for up to three terms at UNSW Sydney. Credit can be transferred back to your degree studies at home.

For a full listing of partner universities, visit [international.unsw.edu.au/partner-universities](https://international.unsw.edu.au/partner-universities)





## How to apply

To apply, you need to be nominated by the Exchange Office at your home university. Our application process is online. Once nominated, an email is sent to you with information on how to complete your application.

## Overseas Student Health Cover (OSHC)

Students are required to have OSHC for the duration of their student visa (except holders of Norwegian, Swedish and Belgium passports). Details on how to purchase OSHC are provided on your acceptance.

## Enrolment

All exchange students are required to enrol in a full-time load of 18 units of credit per term, 24 units of credit per tailored term, or 48 units of credit per academic year. Most courses are weighted six units of credit.

A complete list of courses can be found in the UNSW Sydney Online Handbook. This is a helpful tool when developing your study plan.

We also recommend you check the UNSW Sydney Online Timetable to ensure your courses are offered in your exchange term.

[handbook.unsw.edu.au](http://handbook.unsw.edu.au)  
[timetable.unsw.edu.au](http://timetable.unsw.edu.au)

While most Faculties will accept suitably qualified exchange students, in some areas restrictions do apply.

For more information visit:  
[international.unsw.edu.au/exchange\\_to\\_unsw](http://international.unsw.edu.au/exchange_to_unsw)

Enrolment is subject to course availability and your academic background. It is important to be flexible with your course choice as some fill up quickly or may not be offered in a particular term.

## Internships

Exchange students can apply for Study Abroad internships however they will be charged the internship tuition fee. Contact our office for further information and application forms.

## Application process

### 1 Nomination by your home university

An email with application instructions and logon details will be sent to you

### 2 Start your application

Check the name on your application is the same as on your passport

### 3 Check the UNSW Sydney courses you wish to study are offered in the term you will be at the university

### 4 Submit your application online

Complete your application and upload supporting documents including:

1. Your most recent academic transcript (with English translation) as PDF
2. The ID page of your passport
3. Proof of the English language proficiency if applicable (see page 32)

### 5 Accept your offer

Your application is assessed by Exchange. If successful you will receive your acceptance by email. Accept your offer online and apply for housing.

### 6 Purchase your OSHC

Details will be provided by Exchange. You will then receive your confirmation of enrolment (CoE) for your visa application.

### 7 Confirm your visa and book flights to arrive in time for orientation

## Student Exchange

UNSW Sydney

T: +61 2 9385 3179

E: [exchange@unsw.edu.au](mailto:exchange@unsw.edu.au)





# GET FRIENDLY AND HELPFUL SUPPORT

Our students tell us we are one of the friendliest universities in Australia with a host of support services you can rely on.

## Arrival support

From picking you up from the airport, running orientation events and taking you on campus tours, we make sure you feel orientated, safe and well connected. Our dedicated Study Abroad and Exchange teams are available to help you find all the information you need to settle in.

## Language and conversation skills

Improve your English language skills by taking up one of the many programs, workshops, weekly conversation classes or discussion groups available. We also offer one of Australia's leading and most popular language exchange programs. Get matched with other people who speak a language you would like to learn and, in return, teach them a language that you speak.

[student.unsw.edu.au/lep](http://student.unsw.edu.au/lep)

## Academic support

As a UNSW Sydney student, you'll get access to free online resources, exam preparation tips and more. The Learning Centre offers academic skills support for students, including individual consultations on academic writing, research, essays and reports.

[student.unsw.edu.au/skills](http://student.unsw.edu.au/skills)

## Student advisors

Make an appointment with our Study Abroad and Exchange teams at any time for personalised advice and information about life at UNSW Sydney.

## The Hub

The Hub is a welcome space for students to explore professional development opportunities such as volunteering, peer mentoring and leadership skill development. The Hub is also a shared space for students to use.

[student.unsw.edu.au/hub](http://student.unsw.edu.au/hub)

## Looking after your wellbeing

Through our Counselling and Psychological Services (CAPS), you'll have the opportunity to talk to a professional counsellor who may be able to assist or help you resolve or manage your situation.

[student.unsw.edu.au/counselling](http://student.unsw.edu.au/counselling)

## Student association

Arc is our student association – it's run by students for students. Joining Arc is a great way to get involved in our many clubs and societies. Find out about parties and events, or get discounts from partner organisations, free legal advice, and assistance with finding a part-time job or volunteer work.

[arc.unsw.edu.au](http://arc.unsw.edu.au)

## Social activities

Students have the opportunity to explore some of Australia's natural wonders, take weekend trips to the Blue Mountains, Royal National Park and Hunter Valley, go whale-watching, surfing and more. See Study Abroad and Exchange for details.







# UNSW ENGLISH LANGUAGE REQUIREMENTS

## Test requirements

Qualification	Minimum grade
IELTS Academic version only	6.5 overall*
TOEFL Internet-based Test (iBT)	90 overall
TOEFL Paper-based Test (PBT)	577 overall

\*Law and post-graduate Business have a 7.0 minimum requirement.

More information on our English Language requirements can be found at [unsw.edu.au/english-requirements-policy](http://unsw.edu.au/english-requirements-policy)

## Qualification requirements

Qualification	Minimum grade
Danish Studentereksamen (Higher Preparatory Examination)	Grade 7 in English in the final year (English B or English A)
Vitnemål (Norwegian Certificate of Upper Secondary Education)	Grade 4 in the First Year of Upper Secondary English (if this is the only completed English subject); or average grade of 4 in all completed Upper Secondary English subjects
Swedish Secondary School Leaving Certificate	Grade D in English in the final year (English 6/ English Course B)

\*Other countries' high school qualifications accepted

# UNSW SYDNEY QUICK LINKS

## Contact details

Study Abroad and Exchange are part of External Relations. We are committed to making your experience at UNSW an enjoyable one.

## Address

Study Abroad and Exchange  
Rm G30 Ground Floor, West Wing  
Goodsell Building  
UNSW SYDNEY NSW 2052  
Australia

## Contact us

T: +61 2 9385 3179

## Exchange

E: [exchange@unsw.edu.au](mailto:exchange@unsw.edu.au)

W: [international.unsw.edu.au/study-abroad-at-unsw](http://international.unsw.edu.au/study-abroad-at-unsw)

## Study Abroad

E: [studyabroad@unsw.edu.au](mailto:studyabroad@unsw.edu.au)

W: [international.unsw.edu.au/study-abroad-at-unsw](http://international.unsw.edu.au/study-abroad-at-unsw)

## Study Abroad Research Practicum

E: [practicum@unsw.edu.au](mailto:practicum@unsw.edu.au)

W: [international.unsw.edu.au/research-practicum](http://international.unsw.edu.au/research-practicum)

## Social media



[g+](https://plus.google.com/+universityofnsw) @universityofnsw

[twitch](https://www.twitch.tv/ozunsw) @ozunsw

[in](https://www.linkedin.com/company/university-of-new-south-wales) @university-of-new-south-wales

[YOUKU 优酷](http://i.youku.com/u/UNTc1OTIyMTQ4) i.youku.com/u/UNTc1OTIyMTQ4

## Applying to UNSW

Online Handbook

[handbook.unsw.edu.au](http://handbook.unsw.edu.au)

Online Timetable

[timetable.unsw.edu.au](http://timetable.unsw.edu.au)

Study Abroad Application Portal

[unsw.openacademies.com/registerforstudyabroad](http://unsw.openacademies.com/registerforstudyabroad)

English Language Requirements

[unsw.edu.au/english-requirements-policy](http://unsw.edu.au/english-requirements-policy)

## More about UNSW Sydney

UNSW Home page

[unsw.edu.au](http://unsw.edu.au)

International Centre

[international.unsw.edu.au](http://international.unsw.edu.au)

Student Life@UNSW

[unsw.edu.au/life](http://unsw.edu.au/life)

UNSW Alumni

[alumni.unsw.edu.au](http://alumni.unsw.edu.au)

## Student services

Accommodation

[accommodation.unsw.edu.au](http://accommodation.unsw.edu.au)

University Library

[library.unsw.edu.au](http://library.unsw.edu.au)

Careers and Employment

[careers.unsw.edu.au](http://careers.unsw.edu.au)

Arc@UNSW

[arc.unsw.edu.au](http://arc.unsw.edu.au)

## Government resources

Student visas

[border.gov.au](http://border.gov.au)

Australian diplomatic missions

[dfat.gov.au/missions](http://dfat.gov.au/missions)





*"I had a chance to take classes that were both specific to Australia and that I couldn't find at my own university."*

Stesha Doku (USA)



*"I needed to undertake my research thesis while studying abroad. When I was looking for a university to study at, I found an ideal supervisor at UNSW."*

Tomas Persson (Sweden)



*"The UNSW campus is huge and I enjoy the diverse atmosphere with its many international students. The professors are very relaxed and have a great interaction with the students."*

Katharina Nickel (Germany)

