



GUIDE BOOK FOR INTERNATIONAL EXCHANGE STUDENTS

GUIDE BOOK

for International Exchange Students

- 03** Welcome
- 04** YU at a Glance
- 05** Evaluation
- 06** Sisterhood Relationships
- 08** Academics
- 12** Life on Campus
- 16** Affiliated Organizations
- 18** Campus Map

WELCOME TO YEUNGNAM UNIVERSITY

Welcome all the international exchange students!

It gives us a great pleasure to extend warmest welcome to all of you and to help you design your future here at Yeungnam University.

Since its foundation, Yeungnam University has enhanced a reputation as a prestigious university, with about 218,000 graduates who have been playing important roles domestically and internationally. Geared with its tremendous potentiality originating from its history and tradition, Yeungnam University is regenerating itself through the "Globalization" project along with a new resolution.

It has excellent human resources such as energetic and creative students, and the renowned and dedicated faculty, as well as the state-of-the-art facilities and well-organized administrative systems on the widest and the most beautiful campus in Korea.

All the faculty and staff at Yeungnam will create a friendly and sustainable environments for the effective interactions and dynamics in the campus community.

We will also do our best to be qualified for competence with the other global schools.



YU at a Glance

Established

- 1947. 09 Establishment of Daegu College approved
- 1950. 04 Establishment of Chunggu College approved
- 1967. 12 The educational foundation, Yeungnam Academy, established (by the merger of Daegu College and Chunggu College)
Establishment of Yeungnam University approved

Members

(As of October 2017)

Enrolled Students (32,938)

- Undergraduates : 29,887
- Graduates & Professionals : 3,051

Faculty (885)

- Professors : 479
- Associate Professors : 142
- Assistant Professors : 132
- International Professors : 132

Graduates (223,730)

- Undergraduates : 193,421
- General Graduates : 13,699
- Professional and Special Graduates : 12,970
- Doctors : 3,640

Staff (293)

- Administrative Staff : 201
- Librarians : 23
- Specialists : 11
- Technicians : 58

Campus

Gyeongsan Campus Land of 2,649,458m², and 161 buildings in a space of 431,841m²

Daemyeong Campus Land of 85,081m², and 6 buildings in a space of 25,133m²

International Evaluation

- In top 10 Asian International Universities for the dramatic changes in global education of the new millennium by Asian Correspondant News Report(2001)
- Math and Computer Research Power 50th in the World, 1st in Korea (2016 Leiden Ranking)
- Ranked 128th overall in Asia (22nd in the nation) in the 'QS 2016 Asian University Rankings'
- Ranked 601-800 in the world(14th in the nation) in Times Higher Education, World University Rankings 2015
- Ranked 18th for the professor research sector, 9th for the number of citations in international theses, 14th in Engineering, 16th in Natural Science and 20th in Sociology in the University Evaluations 2015 by Joongang Ilbo
- Ranked 15th in the nation for the number of students studying abroad in 2014, (Ministry of Education)



Awarded

- 'A' rating, the highest rating in the '2015 University Structure Reform Evaluation' by the Ministry of Education
- 'Minister of Employment and Labor Award' selected as the best university in the career development sector in 2015
- 3rd place in 3rd place in world for e-learning sector by the 'The Wharton-QS Stars Reimagine Education Awards 2014'
- 'True Education Award of Korea' selected by the Journalists Federation of Korea in 2014
- The 1st 'Korean Education Donation Award' from the Ministry of Education in 2012
- The prize for 'University of the Year' at the 'Engineering Education Festa' in 2012
- Presidential Prize for 'Job Creation Assistance Program' in 2010
- The 1st Presidential Prize for 'Voluntary Work nationwide' in 2010
- Grand Prize for 'Innovation in Education' in 2010

Sisterhood Relationships

52 Countries / 406 Universities and Institutes
(As of October, 2018)

Europe

Major Institutions

- University of Oxford
- University of Liverpool
- University of Strasbourg
- University of Wuerzburg
- Amsterdam University of Applied Sciences
- University of Warsaw

China

Major Institutions

- Xi'an Jiaotong University
- Huazhong University of Science and Technology
- Lanzhou University
- Sun Yat-sen University
- Shandong University
- The Education University of Hong Kong

North America

Major Institutions

- University of California, LA
- Texas Tech University
- University of Nebraska at Omaha
- University of Missouri-Kansas City
- University of South Florida
- University of Delaware

Japan

Major Institutions

- Tohoku University
- Gunma University
- Hiroshima University
- Yokohama National University
- Kansai GaiDai University
- Chuo University

South-East Asia

Major Institutions

- Chulalongkorn University
- University of Malaya
- Nanyang Polytechnic
- Indian Institute of Technology Guwahati

Australia

Major Institutions

- University of Adelaide
- Macquarie University
- Swinburne University of Technology
- University of Sunshine Coast

South America

Major Institutions

- Universidade de Sao Paulo
- Universidade Estadual de Campinas (UNICAMP)
- Universidade De Brasillia
- Tecnologico de Monterrey
- Universidad Nacional Autonoma De Mexico (UNAM)
- Universidade Nacional De Colombia



Yeungnam University

Academics

Undergraduate Programs

Liberal Arts

<http://liberalart.yu.ac.kr>

Korean Language & Literature / Chinese Language & Culture, Chinese Translation & Interpretation / Japanese Language & Literature / English Language & Literature / European Language & Culture : French Language & Literature, German Language & Culture / Philosophy / History / Cultural Anthropology / Psychology / Sociology / Media and Communication

Engineering

<http://eng.yu.ac.kr>

Civil Engineering / Environmental Engineering / Urban Planning & Engineering / Materials Science & Engineering / Chemical Engineering / Textile Engineering & Technology / Fiber System Engineering

Mechanical and Information Technology

Mechanical Engineering / Electrical Engineering / Electronic Engineering / Computer Engineering / Information & Communication Engineering / Automotive Engineering / Robotic Intelligent Machine Engineerin

Law

<http://law.yu.ac.kr>

Law

Political Science & Public Administration

<http://law.yu.ac.kr>

Political Science & Diplomacy / Public Administration / Saemaeul Studies and International Development / Police Administration / Military Studies

Business & Economics

<http://cce.yu.ac.kr>

Economics & Finance / International Economics & Business

Business

<http://sob.yu.ac.kr>

Business Administration / Accounting and Taxation / Global China

Medicine

<http://yumc.yu.ac.kr>

Premedical Course / Medicine

Pharmacy

<http://pharm.yu.ac.kr>

Pharmacy : Pharmacy / Industrial Pharmacy

Life & Applied Sciences

Food Economics & Service / Horticulture & Life Science / Forest Resources & Landscape Architecture / Food Science & Technology / Biotechnology / Medical Biotechnology

Human Ecology & Kinesiology

<http://chek.yu.ac.kr>

Family & Housing Studies / Food & Nutrition / Kinesiology : Sport Science, Danse / Clothing & Fashion

Education

<http://education.yu.ac.kr>

Education / Korean Language Education / English Language Education / Archaic Sino-Korean Education / Mathematics Education / Early Childhood Education / Special Physical Education

Design & Art

<http://art.yu.ac.kr>

Fine Arts : Painting, Trans Art / Visual Communication Design / Industrial Design / Living Products Design

Music

<http://music.yu.ac.kr>

Music : Composition, Korean Music / Vocal Music / Instrumental Music : Piano, Orchestral Instruments

Basic Studies

<http://cbs.yu.ac.kr>

School of General Education / Chunma Honors School / Free Majors

Natural Sciences

Mathematics / Statistics / Physics / Chemistry and Biotechnology / Life Sciences

Architecture

Architecture (5 year program) / Architectural engineering (4 year program) / Architectural Design (4 year program)



Yeungnam University (YU) has two campuses; Gyeongsan Campus is the main one located on 2,649,458m² and Daegu Campus with the University Medical Center is located in Daemyung-dong in the city of Daegu.

Currently, there are 17 colleges, one (1) evening program, one (1) independent schools, one (1) graduate school, Law School and Nine (9) Special Graduate Schools. YU consists of 33,798 undergraduate students, 3,379 graduate students, and 1,202 faculty members and staff with fine facilities and academic organizations. The university library has over 1,820,000 volumes, and the university museum holds the distinction of being named 'Best Cultural Facility'. There are also 19 auxiliary organizations and 46 academic research institutes .

Graduate Programs

Graduate School

- Humanities and Social Fields
- Natural Science
- Engineering
- Fine Arts & Physical Education
- Medicine
- Interdisciplinary Study

Professional Graduate School

- Law School
- School of Medicine

Special Graduate Schools

- Graduate School of Business Administration
- Graduate School of Public Administration
- Graduate School of Arts & Design
- Graduate School of Environment & Public Health Studies
- Graduate School of Sports Science
- Graduate School of Clinical Pharmacy
- Graduate School of Education
- Graduate School of Engineering
- Park Chung Hee School of Policy and Saemaul

Academic Calendar

1st semester
(Spring semester)

March
1st week
Beginning classes

April
8th week of the semester
Mid-term exam

June
16th week of the semester
Final exam
Last week of June
Beginning summer vacation

2nd semester
(Fall semester)

August
3rd week of August
Registration & signing up classes
Last week of August
Beginning classes

October
8th week of the semester
Mid-term exam

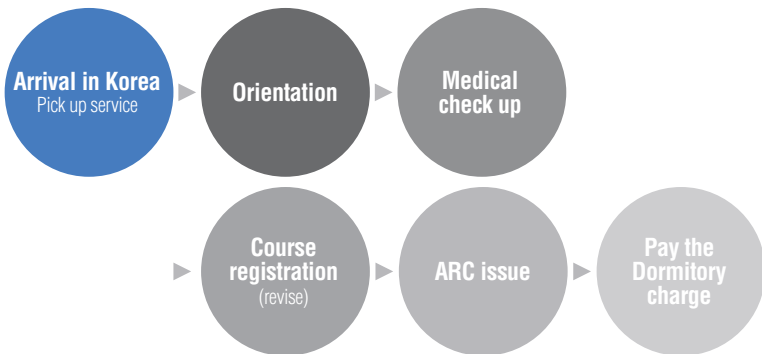
December
16th week of the semester
Final exam
3rd week of December
Beginning winter vacation

February
3rd week of February
Registration & signing up classes

Grading System

A+	Average Point 4.5 Score 95-100	A	Average Point 4.0 Score 90-94
B+	Average Point 3.5 Score 85-89	B	Average Point 3.0 Score 80-84
C+	Average Point 2.5 Score 75-79	C	Average Point 2.0 Score 70-74
D+	Average Point 1.5 Score 65-69	D	Average Point 1.0 Score 60-64
F	Average Point 0 Score 0-59	P	Average Point Admitted Score Pass

Life on Campus



Pick-up service

The office of international Cooperation provide pick-up service when you arrived at Daegu or Gyeongsan

Alien registration card (issue/return)

All international exchange students are required to report to the Office of International Cooperation as soon as possible on arrival, to receive information about Immigration(alien registration card) and campus rules.

For Issue : One (1) photo(white-backgrounded)

*21US\$(30,000KRW)

Alien registration card application form At the Immigration Office

For Return : When the students who are permanently departing Korea

At the departure airport

If you Failure to return the ARC, it will result in fine up to *US\$865(1,000,000KRW) for breach of Immigration Act Article 37

*Students must carry their alien registration card at all times as an identification card.

Student ID Card

With ARC, the student can issue Students ID card at Daegu Bank.

With this ID card, you can use libraries, rent the books and check the attendance.

Insurance

All of the international exchange students must purchase medical insurance.

Costs : *US\$43(KRW50,000) for 3 Months

Covers : *US\$100,000(about)

*Purchased in the home country is acceptable.



Dormitory

<http://edormi.yu.ac.kr>

All campus facilities are in walking distance from the residence halls, and the residents can build their academic and personal competences by fully utilizing the accommodation at the university. Your own cooking utensils are not permitted, but all of the residents can join the optional meal plan.

YU Dormitory(1 semester)

*Dormitory fee is subject to change

Type of Room	Management Fee	Student Council Fee	Meal Plan
Double	US\$493 (KRW543,000)	US\$9 (KRW10,000)	US\$742 (KRW816,500)
	US\$548 (KRW603,000)	US\$9 (KRW10,000)	US\$742 (KRW816,500)
	US\$603 (KRW664,000)	US\$9 (KRW10,000)	US\$742 (KRW816,500)
Quadruple	US\$460 (KRW506,000)	US\$9 (KRW10,000)	US\$742 (KRW816,500)
	US\$571 (KRW629,000)	US\$9 (KRW10,000)	US\$742 (KRW816,500)

※ 1US\$=1,150KRW

※ 1US\$=1,150KRW



Libraries

Operating Hours

- Library

Library during semester : 9:00~22:00 on Weekdays, 09:00~13:00 on Saturday

Vacation : 10:00~17:00 on weekdays, closed on Saturday

- Reading rooms are open 24hours, 365 days a year

Circulation

For undergraduate students loaning up to 10 books & returning within 14 days

Healthcare Service

All of international exchange students must observe Yeungnam University Health Care Policy. Therefore, all international exchange students must pay health care service fee at *US\$15(17,000KRW) per semester.

Wireless LAN service

Connect to "YU-AP" from wireless LAN SSID list, Opening any website will show login page.

Enter your credentials to establish internet connection.

Post office

For the postal service, please visit the Post Office located on the 1st floor in the Amphitheater.

Its business hour is from 09:00 to 17:00 during the weekdays.

Other services for students

Convenient facilities such as student cafeteria, convenience store, stationery are on campus for the students.

- Three (3) cafeterias on campus are serving for the students from 07:00 to 19:00.

- Several convenience store are available from 08:00 to 24:00.

- In the International Center, there are bookstore, coffee shop, stationery, travel agent, sports goods shop, and optician on the 1st floor.

※ 1US\$=1,150KRW

AFFILIATED ORGANIZATIONS



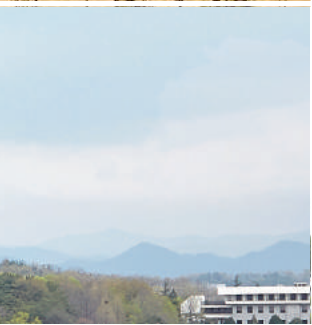
MEDICAL CENTER



CHUNMA ARTS CENTER



FOLKLORE GARDEN

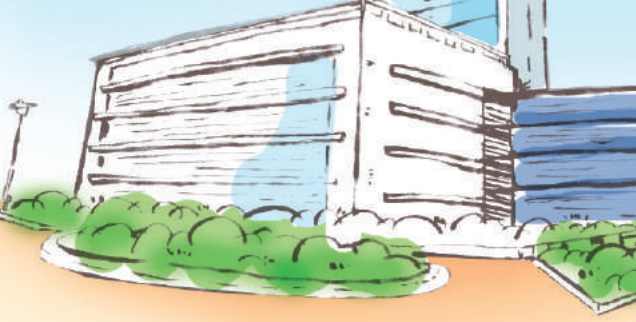


GYEONGBUK GLOBAL EXCHANGE CENTER



UNIVERSITY MUSEUM

YEUNGNAM UNIVERSITY LIBRARY



Campus Map

- A01 Chunma Gate / YU Metro Square
- A04 University Museum
- B04 Central Library
- C01 Headquarters
- D21 Hyangto Hall
- E01 Chunma Arts Center Tower
- 1 Cafeteria of Liberal Arts
- 2 College of Education Building
- 3 College of Design & Art - Art Building
- 4 College of Design & Art -Design Building
- 5 College of Music
- 6 Student Support Center
- 7 International Center
- 8 Soccer Field
- 9 Memorial Gymnasium of Heekun Lee
- 10 Student Center
- 11 Amphitheater
- 12 College of Business & Economics Building
- 13 Law & Political Science Building
- 14 College of Political Science and Public Administration
- 15 Evening Programs Hall
- 16 College of Liberal Arts
- 17 General Lecture Hall
- 18 Liberal Arts Hall 2
- 19 Foreign Language Institute
- 20 Baseball Field
- 21 ROTC
- 22 Folklore Garden
- 23 Law School Library
- 24 Law School
- 25 College of Human Ecology & Kinesiology
- 26 College of Human Ecology & Kinesiology (annex)
- 27 Mirror Pond
- 28 Laboratory Animal Breeding Center
- 29 Sciences Building 1
- 30 Sciences Building 2
- 31 Sciences Building 3
- 32 Science Library
- 33 College of Pharmacy
- 34 Architecture Building
- 35 Computer & IT Center
- 36 Ins' of Information & Computing Systems
- 37 Construction Engineering Building
- 38 College of Science Cafeteria
- 39 Biotechnology Hall
- 40 HQ: College of Natural Resources
- 41 Lab III, College of Natural Sciences
- 42 Lab II, College of Natural Sciences
- 43 Information & Telecommunication Hall
- 44 Electrical Engineering Building
- 45 Textile Engineering Building
- 46 Chemical Engineering Building
- 47 M.E.Practice Factory
- 48 Water Research Laboratory Building
- 49 Materials Engineering Building
- 50 Mechanical Engineering Building
- 51 Production Technology Research Center
- 52 Annex: Center for Research Facilities
- 53 I-A Co-operation Technology Center
- 54 Wind Tunnel Laboratory
- 55 Laboratory Plant
- 56 1st Manufacturing Laboratory
- 57 Security Education Practice Yard
- 58 2nd Manufacturing Laboratory
- 59 Gyeongbuk Technopark
- 60 Convergence Research Center
- 61 Business Incubation Center
- 62 Gymnastics Arena
- 63 Chunma Arena
- 64 Basketball Court
- 65 Artificial turf Arena
- 66 Dormitory
- 67 Gyeongbuk Global Exchange Center
- 68 Pond
- 69 YU Info Lounge (B1)



OFFICE OF EXTERNAL COOPERATION
YEUNGNAM UNIVERSITY

280 Daehak-ro, Gyeongsan, Gyeongbuk, Republic of Korea(38541 Korea)
Tel: +82-53-810-7871~6 **Fax:** +82-53-813-4016 **<http://www.yu.ac.kr>**